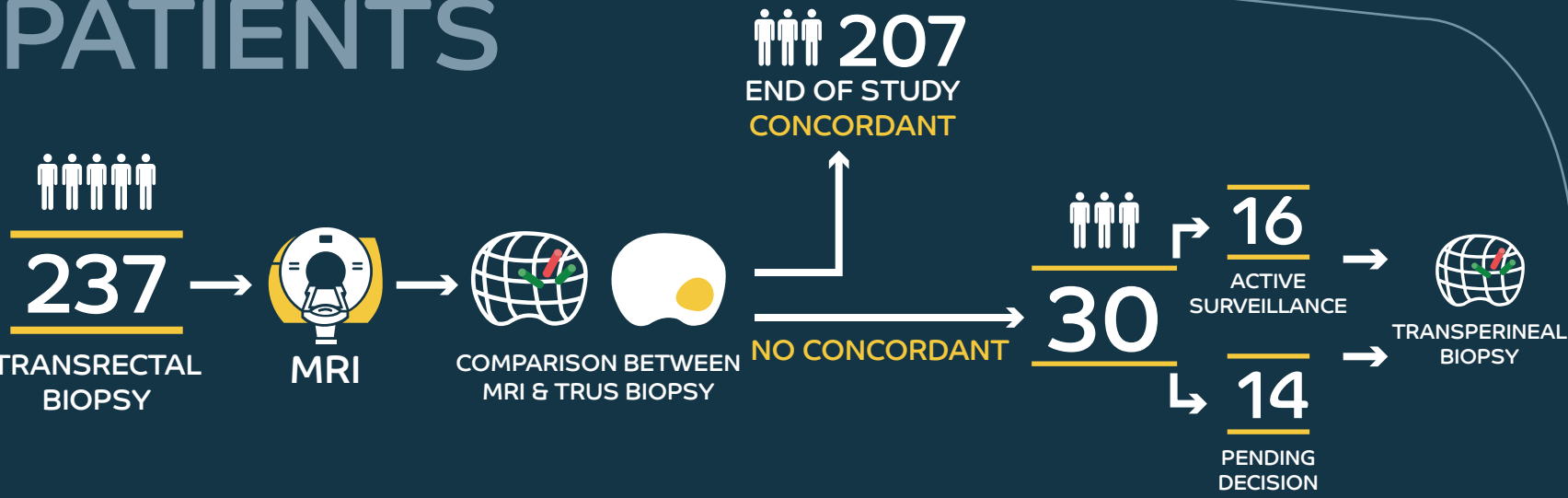


# Refining the risk stratification of **transrectal biopsy** detected prostate cancer by elastic fusion registration **transperineal biopsies**

BAJEAOT ET AL, EUROPEAN UROLOGY ONCOLOGY (2021)

## PATIENTS



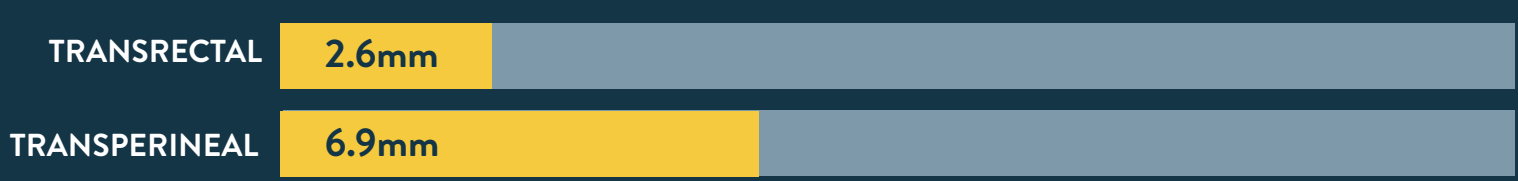
## METHODS

### TRANSFERINEAL BIOPSY - KOELIS MRI/US FUSION



## RESULTS

### MAXIMUM CANCER CORE LENGTH (MEAN)



### TOTAL CANCER CORE LENGTH (MEAN)



### RISK STRATIFICATION MODIFICATION

