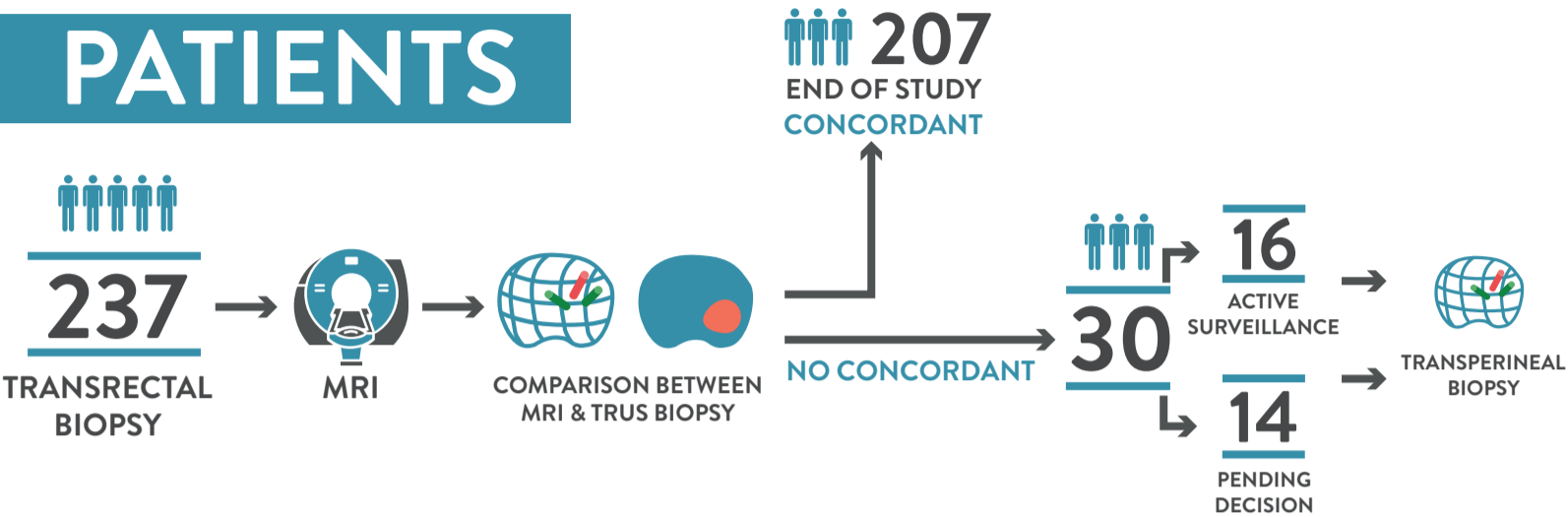


PROSTATE CANCER STUDY

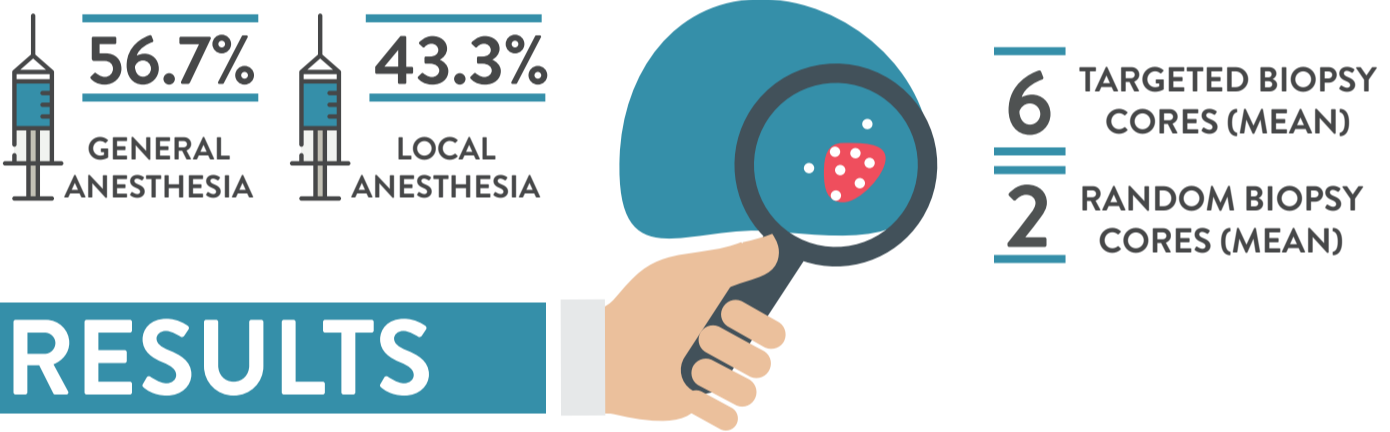
REFINING THE RISK STRATIFICATION OF TRANSRECTAL BIOPSY DETECTED PROSTATE CANCER BY ELASTIC FUSION REGISTRATION TRANSPERINEAL BIOPSIES
 COVIN ET AL, WORLD J UROL, SEPTEMBER 2018

PATIENTS



METHODS

TRANSPERINEAL BIOPSY - KOELIS MRI/US FUSION



RESULTS

MAXIMUM CANCER CORE LENGTH (MEAN)



TOTAL CANCER CORE LENGTH (MEAN)



RISK STRATIFICATION MODIFICATION

